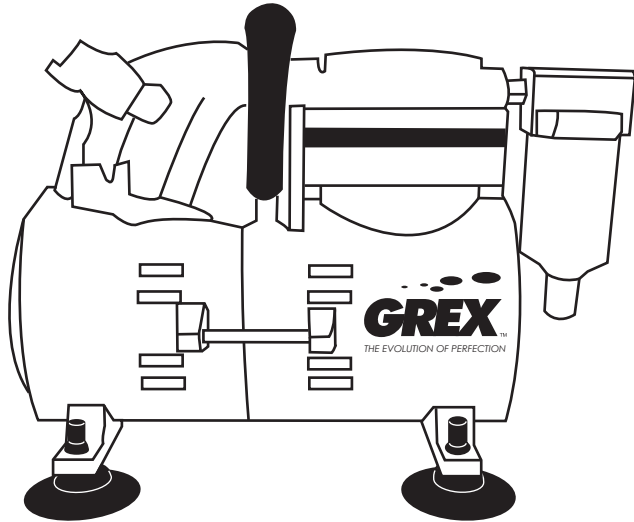


AC1810 / AC1810-A



CAUTION: Before attempting to use or service this tool, carefully read and understand all rules and instructions for safe operation.



NOTE: This manual includes warnings for safe use of this tool, operation instructions and tips on the maintenance and inspection of this tool.

TECHNICAL SPECIFICATIONS

Horse Power	1/8 HP	Operating Pressure	40 - 60 psi (2.8 - 4.2 kgs/cm ²) [AC1810]
Displacement	0.7 cfm (20 L/min)	Net Weight	10 lbs. (4.5 kgs) [AC1810]
Speed	1700 rpm		11 lbs. (5 kgs) [AC1810-A]
Maximum Pressure	60 psi (4.2 kgs/cm ²) [AC1810-A]	Power	115V / 0.96 A / 60 Hz

SAFETY INSTRUCTIONS



WARNING: Improper operation or maintenance of this product could result in serious injury and property damage. Read and understand all warnings and operating instructions before using this equipment.



CAUTION: Read all safety warnings and maintenance instructions before operating equipment to prevent damage to equipment and/or property, and serious injury or death to the operator.

Hazard	Potential Consequences	Prevention
Risk of electric shock or electrocution	<ul style="list-style-type: none"> Electrical shock or electrocution may occur if air compressor is not operated properly. Electrical shock may occur from electrical cord. 	<ul style="list-style-type: none"> Make sure the air compressor is plugged into a properly grounded outlet which provides correct voltage and adequate fuse. Never operate air compressor in wet conditions or outdoors when it is raining, or with safety guards/covers removed or damaged. Check power cord for signs of crushing, cutting or heat damage. Any repairs on air compressor should be done by authorized personnel.
Risk of explosion or fire	<ul style="list-style-type: none"> Serious injury or death may occur from normal electrical sparks in motor and pressure switch. Serious injury or death may occur if any air compressor ventilation openings are restricted, causing compressor to overheat and start on fire. 	<ul style="list-style-type: none"> Always operate air compressor in a well ventilated area free of flammable vapors and combustible materials. Keep flammable material away from the air compressor. Never place objects against or on top of air compressor. Operate air compressor at least 12 inches away from any wall or obstruction that would restrict proper ventilation.
Risk of burns	<ul style="list-style-type: none"> Contact with exposed metal parts can result in serious skin burn. 	<ul style="list-style-type: none"> Never allow any part of the body or other materials to make contact with any exposed metal parts during or immediately after operation of compressor.
Risk to breathing	<ul style="list-style-type: none"> Serious injury or death can occur from inhaling compressed air. The air stream may contain carbon monoxide, toxic vapors or soil particles. Sprayed materials such as paint, paint solvents, paint remover, insecticides, weed killer, etc. contain harmful vapors and poisons. 	<ul style="list-style-type: none"> Never inhale air from the air compressor either directly or from a breathing device connected to the air compressor. Operate air compressor in a well ventilated area. Follow all safety instructions provided with the materials you are spraying. Use of a respirator may be required when working with some materials.
Risk to moving parts	<ul style="list-style-type: none"> The compressor cycles automatically when pressure switch is in the On/Auto position. Moving parts can cause serious injury or damage if they come into contact with body or clothes. 	<ul style="list-style-type: none"> Always turn off air compressor when not in use. Unplug compressor before performing maintenance or attaching tools or accessories. All repairs to the air compressor needs to be made by an authorized personnel. Do not operate without protective covers/guards. Replace damaged covers/guards before using the air compressor.
Risk from flying objects	<ul style="list-style-type: none"> The compressed air stream can cause soft tissue damage and can propel loose debris at a high speed, causing property damage or personal injury. 	<ul style="list-style-type: none"> Always wear safety glasses. Always maintain a safe distance from individuals while operating the air compressor and never point the air stream at any part of your body, or anyone else. Never leave pressurized air compressor unattended. Shut off air compressor before attempting maintenance, attaching tools or accessories.

PREPARATION



CAUTION: Read safety warnings before setting up air compressor.

LOCATION

Place the air compressor in a clean, dry, and well-ventilated area. Air compressor should be placed on a firm, level surface and be at least 12 to 18 inches away from walls or obstacles that may prevent proper ventilation. Do not place materials on top of compressor that may obstruct ventilation openings for proper compressor operating temperature.



DANGER: Do not place air compressor where flammable gas vapors or materials may be present.

ELECTRICAL



DANGER: Improper connection of the equipment-grounding conductor can result in a risk of electrical shock or electrocution. Do not use any type of adapter with this product.



WARNING: The air compressor must be grounded. In the event of a short circuit, grounding reduces the risk of shock by providing a path of least resistance for electric current. The air compressor is equipped with a cord having a grounding wire with an appropriate grounding plug. The plug must be plugged into an appropriate outlet that is properly installed and grounded in accordance with all local codes and ordinances.

GREX does not recommend the use of extension cords. To avoid voltage drop, power loss, and overheating of the motor, use an extra air hose rather than an extension cord.

If use of an extension cord is unavoidable:

- Use only a 3-wire extension cord that has a 3-blade grounding plug and a 3-slot receptacle that will accept the plug on the air compressor.
- Make sure the extension cord is in good condition.
- The extension cord should be no longer than 50 feet.
- The minimum wire size is 12 gauge (AWG). Do not use 14 AWG or 16 AWG.
- Always shut off the air compressor switch before removing the plug from the receptacle.

OPERATING INSTRUCTIONS

DAILY START-UP CHECKLIST

1. Make sure the air compressor motor switch is in the "OFF" position.
2. Make sure all nuts and bolts are snug.
3. Make sure all safety valves are working correctly.
4. Make sure all guards and covers are in place and securely mounted.

START-UP

1. Before attaching air hose and accessories, make sure the motor switch is set to "OFF"
2. Attach hose and accessories.
3. Plug the power cord into a grounded outlet.
4. Set pressure by adjusting the pressure regulator knob. Your compressor is ready for use.
5. Switch motor "ON". Set pressure by adjusting regulator knob if applicable.

MAINTENANCE



CAUTION: Read safety warnings before performing maintenance.

1. Turn off air compressor.
2. Disconnect cord from main power supply.
3. Wait for the air compressor to cool before starting service.

MAINTENANCE CHART

Procedures	Daily	Weekly	Monthly	300 Hrs.
Check for unusual noise/vibration	X			
Check for air leaks	X			
Check nuts and bolts	X			
Inspect air filter		X		
Clean exterior of compressor		X		
Check safety valve			X	
Replace air filter				X

TROUBLESHOOT GUIDE

Trouble	Possible Cause	Remedy
Motor will not run or start	<ul style="list-style-type: none"> • Wrong gauge wire or length of extension cord. • Loose electrical connections. • Defective motor, motor capacitor, motor/pressure switch, or check valve. 	<ul style="list-style-type: none"> • Check for proper gauge wire and cord length. • Check wiring connections inside pressure switch and terminal box area. • Contact an authorize service center for inspection or replacement if necessary.
Noisy Operation	<ul style="list-style-type: none"> • Loose motor pulley or pump flywheel. • Lack of oil in the pump. • Carbon deposits on pistons or valves. • Bearing, piston or connect rod failure. 	<ul style="list-style-type: none"> • Tighten pulley and/or flywheel. • Add correct amount of oil. Check for bearing damage. • Remove cylinder head and inspect. Clean or replace. • STOP THE COMPRESSOR! Contact customer service.
Air leaks at fittings	<ul style="list-style-type: none"> • Fittings are not tight enough. 	<ul style="list-style-type: none"> • Tighten fittings where air can be heard escaping. Check fittings with soapy water solution. Do not over tighten.

WARRANTY

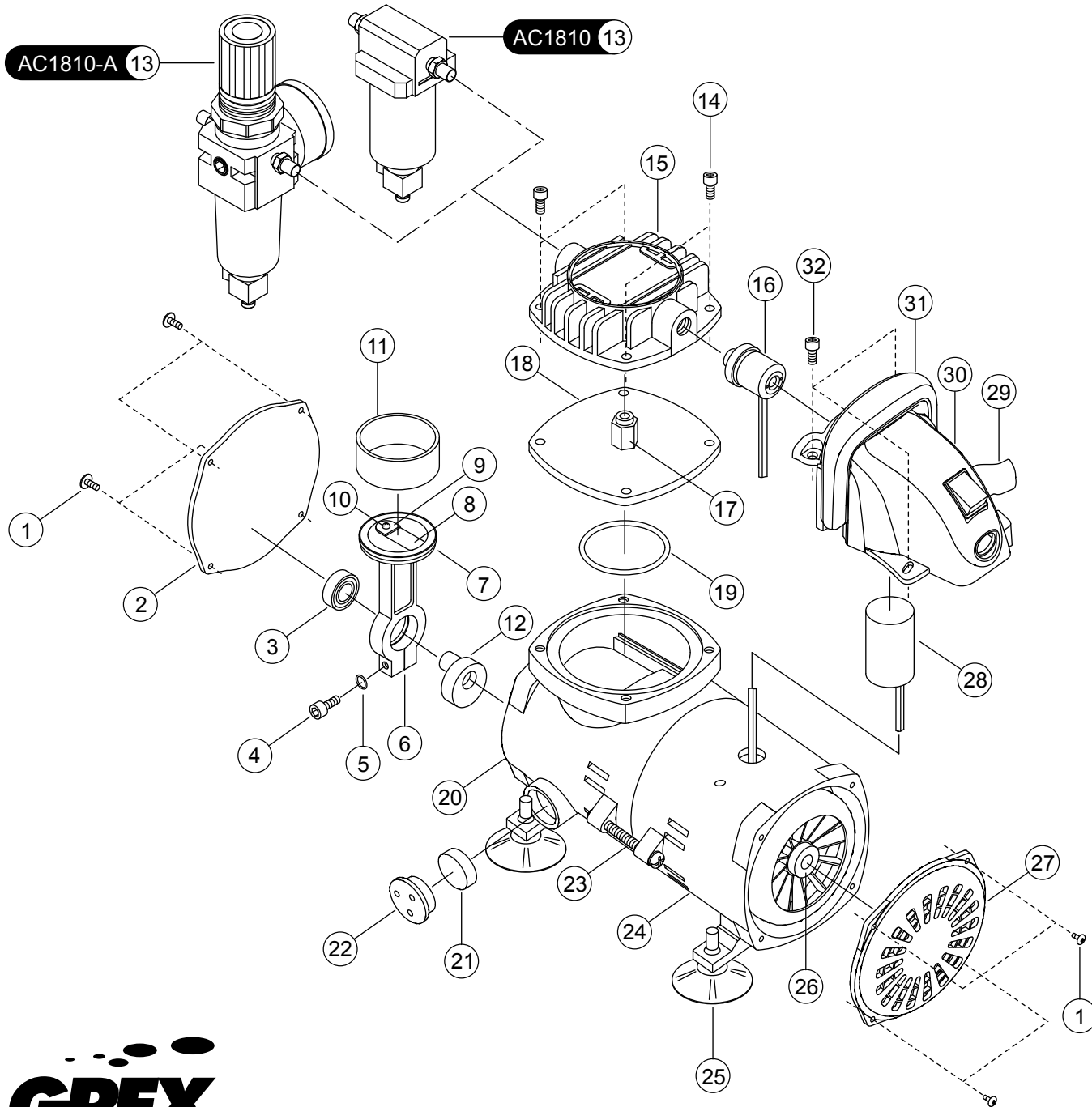
All Grex airbrushes are warranted against manufacturing defects of material and manufacture or workmanship for a period of ONE year from the original date of purchase. This warranty does not cover fluid needles, fluid nozzles and o-rings since these parts need to be replaced occasionally due to normal wear. Any parts of the product covered under this warranty will be repaired or replaced at our option, which after examination proves to be defective in workmanship or material during the warranty period.

This warranty does not apply to repair or replacement parts required due to misuse, abuse, normal wear and tear or repairs and alterations attempted. In no event shall Grex be liable for any indirect, incidental, or consequential damage from the sales or use of this product. This disclaimer applies both during and after the term of this warranty.

This is the only warranty and our company makes no warranties express or implied, including merchantability and fitness for a practical purpose, after the two year term of this warranty.

This limited warranty gives you specific rights and you may also have other rights, which vary from state to state.

AC1810 / AC1810-A Exploded Diagram & Parts List



No.	Description	Item No.
1.	Set screw	C1810-01
2.	Front cover	C1810-02
3.	Ball bearing	C1810-03
4.	Screw	C1810-04
5.	Washer	C1810-05
6.	Connecting rod	C1810-06
7.	Upper push plate	C1810-07
8.	Diaphragm	C1810-08
9.	Lower push plate	C1810-09
10.	Screw	C1810-10
11.	Cylinder	C1810-11
12.	Camrod	C1810-12
13.	Moisture trap assembly (AC1810)	C1810-13A
	Moisture trap, pressure gauge & air regulator assembly (AC1810-A)	C1810-13B
14.	Set screw	C1810-14
15.	Cylinder head	C1810-15
16.	Pressure switch	C1810-16
17.	Stop valve	C1810-17
18.	Middle plate	C1810-18
19.	O-ring	C1810-19
20.	Front housing	C1810-20
21.	Filter element	C1810-21
22.	Filter cover	C1810-22
23.	Set screw	C1810-23
24.	Rear housing	C1810-24
25.	Rubber foot	C1810-25
26.	Fan blade	C1810-26
27.	Fan cover	C1810-27
28.	Condenser	C1810-28
29.	Airbrush holder	C1810-29
30.	Condenser housing	C1810-30
31.	Handle	C1810-31
32.	Set screw	C1810-32

